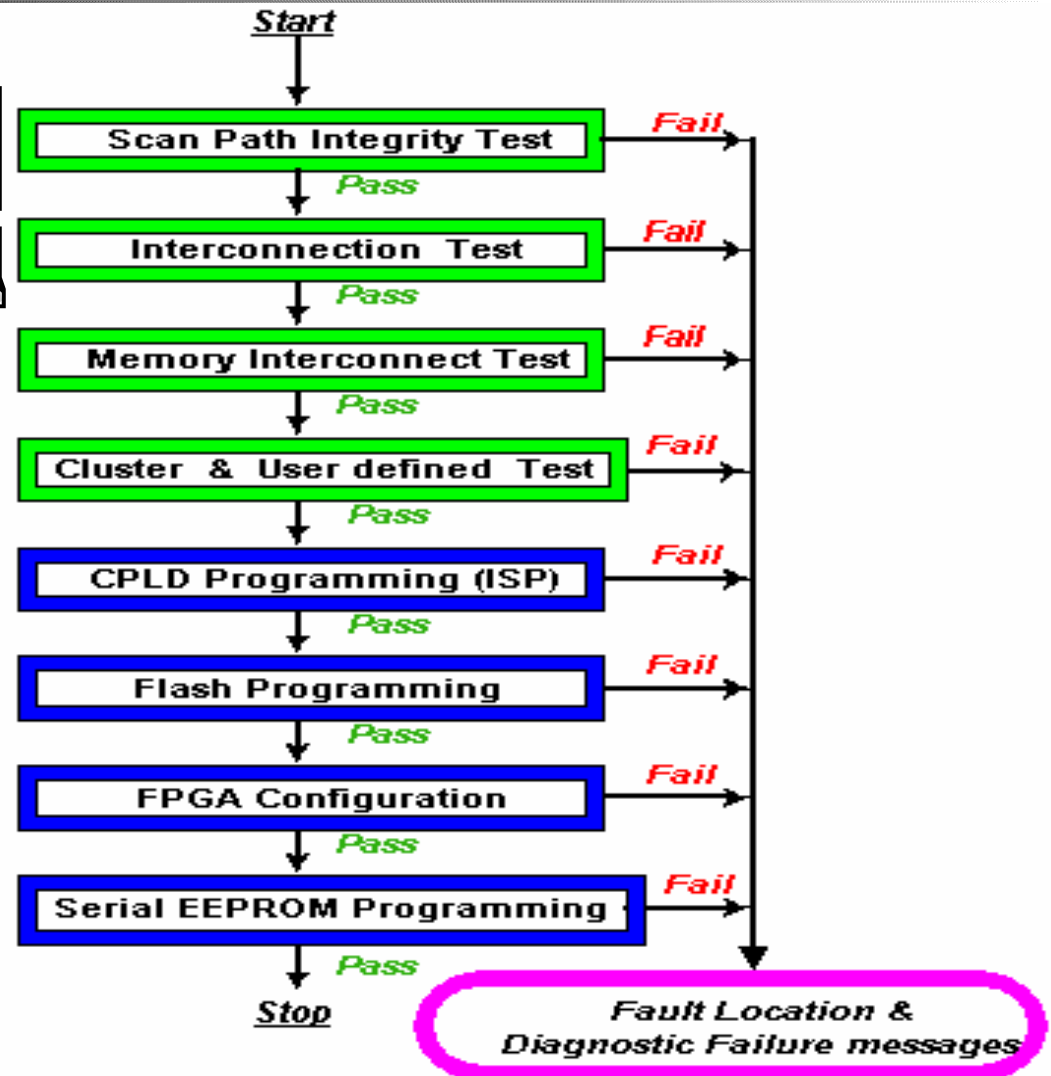
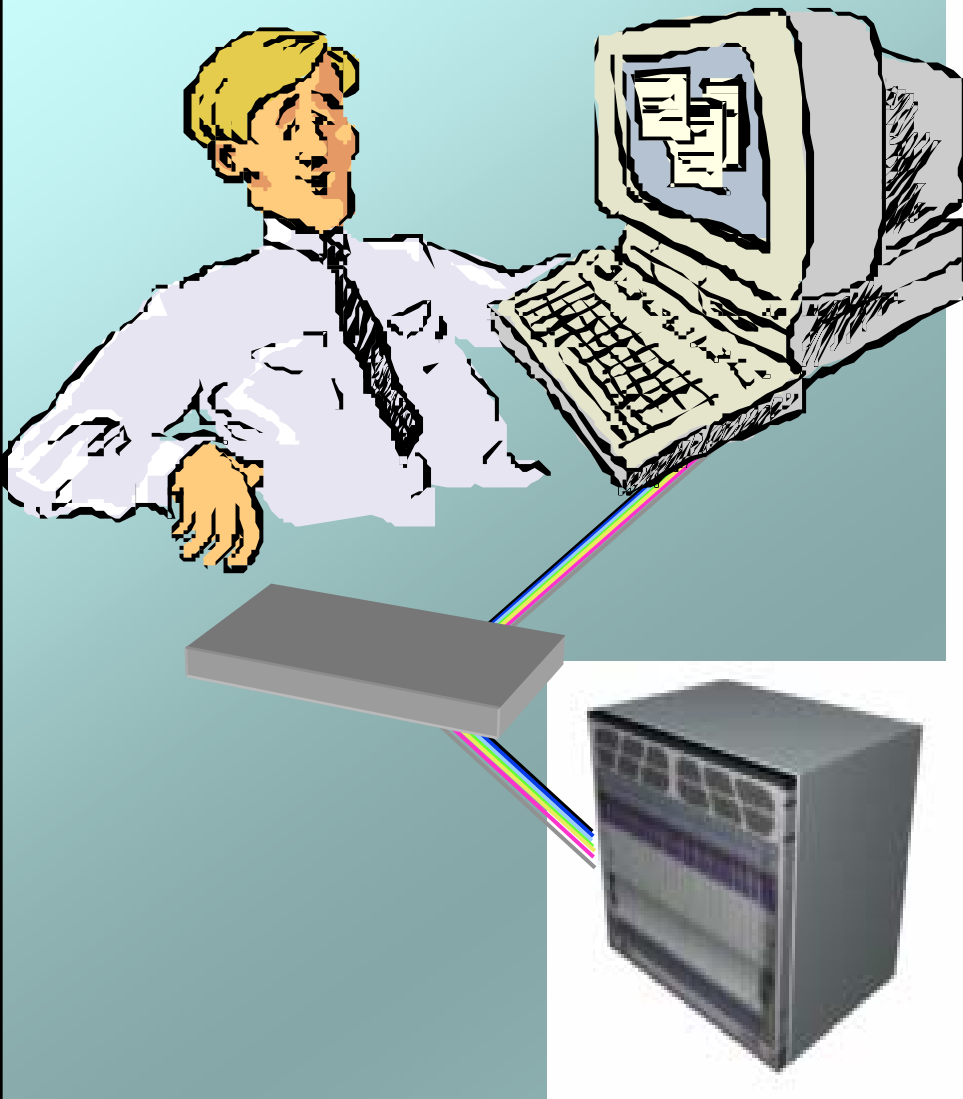


PART

2

Boundary-Scan (JTAG) Applications at the Board Level

2.1 Activity Flowchart

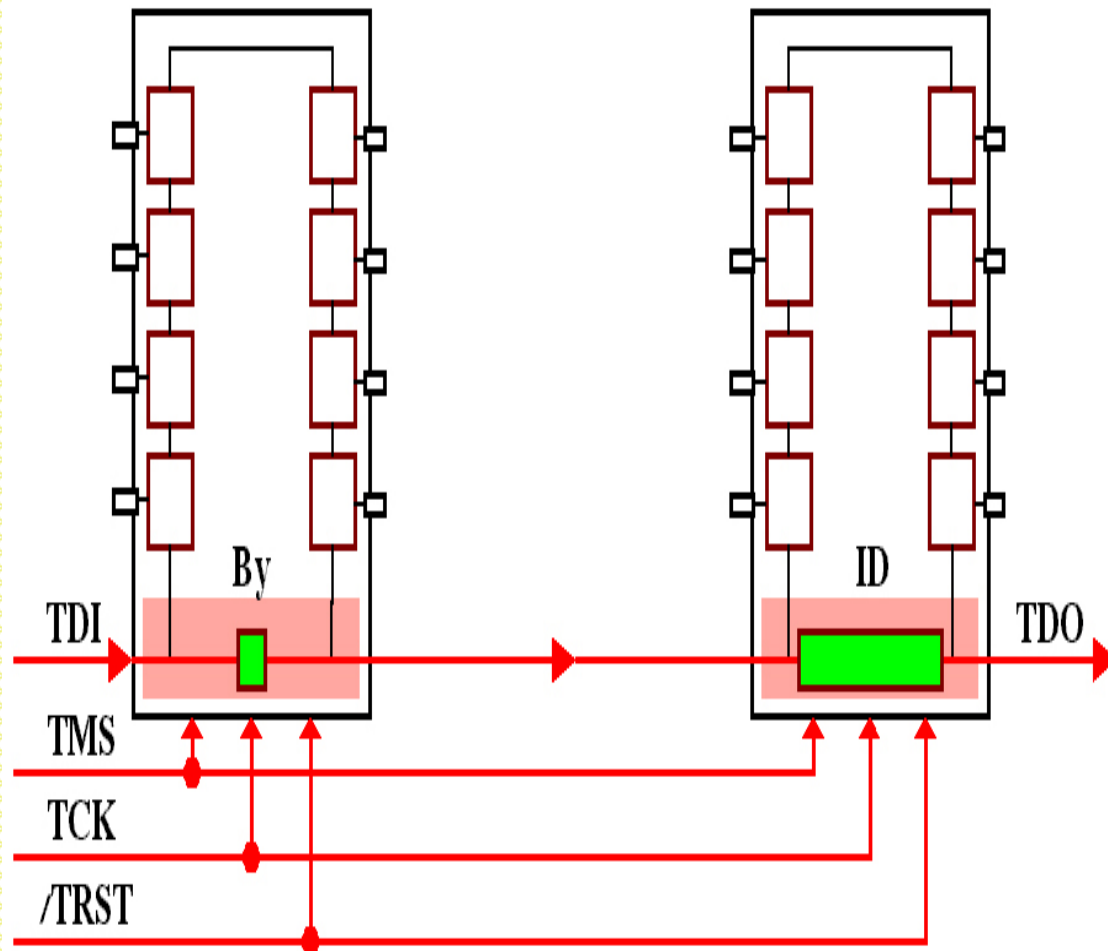


2. Boundary-Scan Applications at the Board Level

2.2 Scan Path Integrity Test

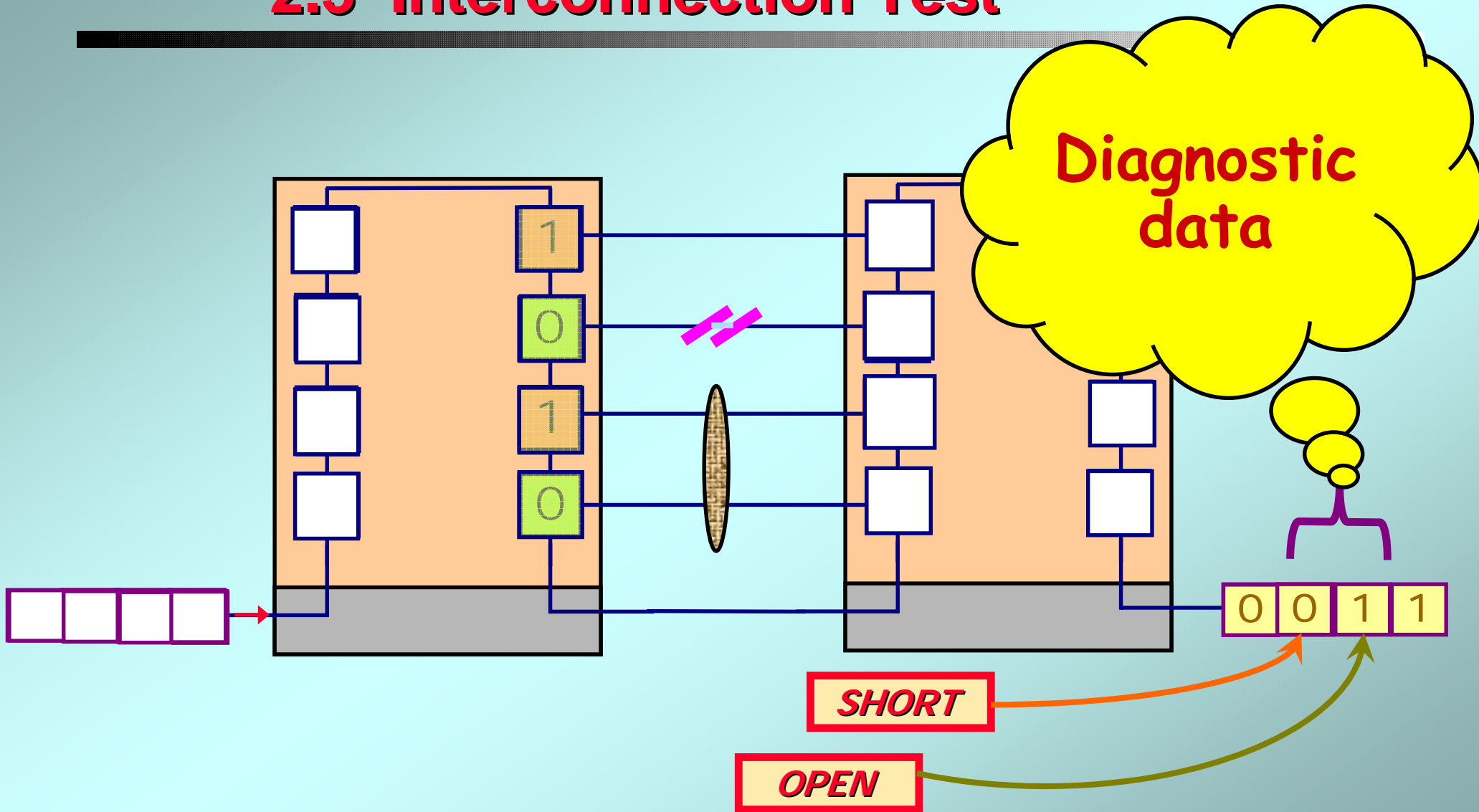
- S-a-0 on the TDI/TDO scan path
- Inoperative TCK
- Inoperative TMS
- Inoperative /TRST
- Incorrect scan path length (BS-register) or improper placement of BS devices
- Instruction capture
- BYPASS Instruction
- IDCODE Instruction
- USERCODE Instruction

Faults detected:

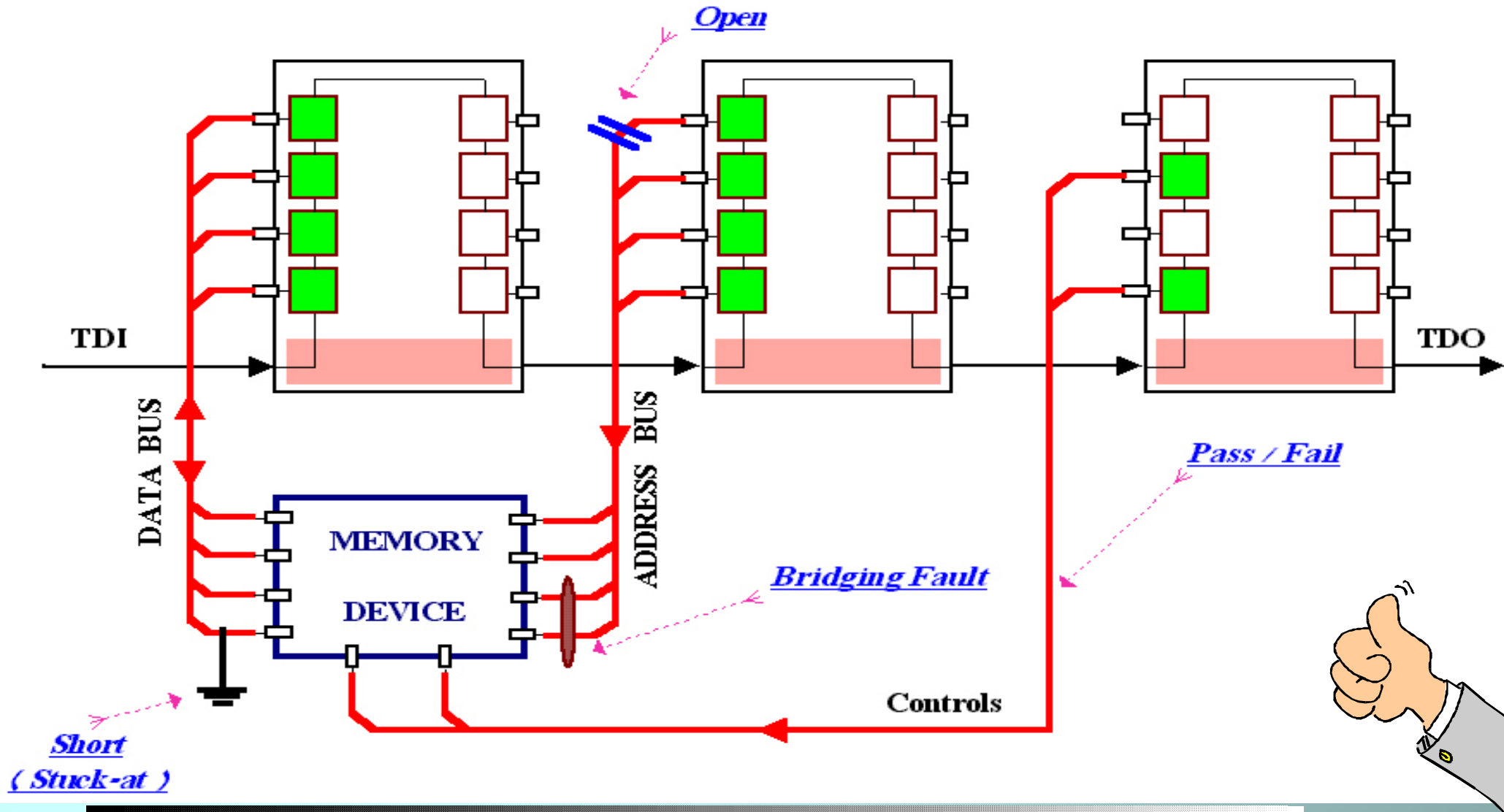


Applications at the Board Level

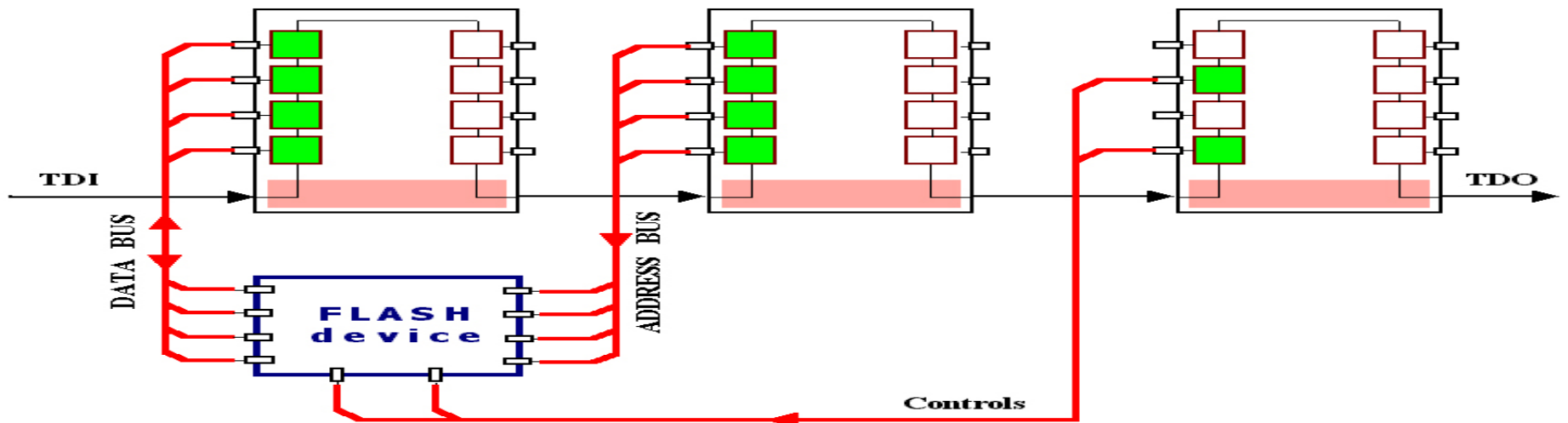
2.3 Interconnection Test



2.4 Memory Interconnect Testing



2.5 On-Board Flash Programming



➤ What is it ? On-board device programming

➤ What devices ?
Non-Boundary-Scan devices (Flash, PROM)

➤ How ?
By a parallel access via surrounding BS-devices

➤ Why ? The same as ISP

*Are you interesting to continue ?
Explanations and details ?
Please contact us now !*

Click

<http://www.Start-Test.com/University/CoursesSeminars.aspx>